

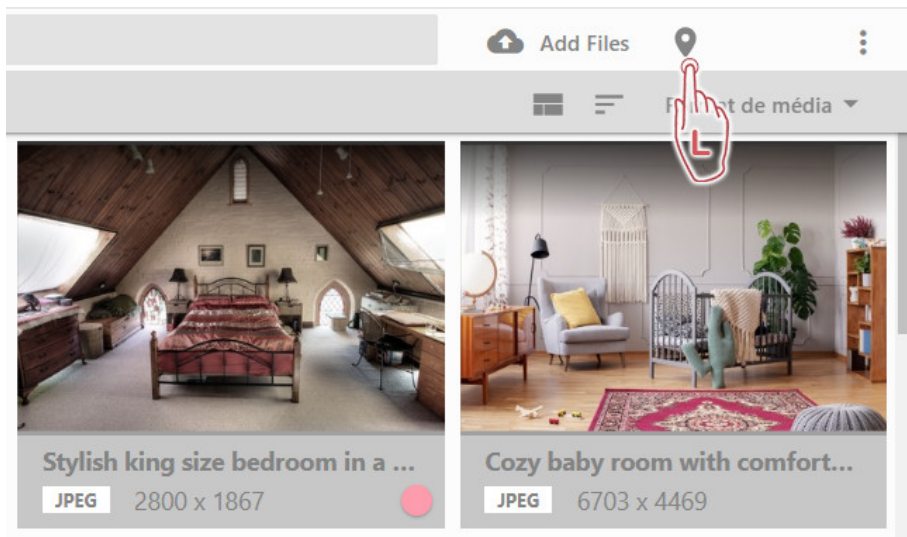
*This feature is available in the web client in Daminion v 6.4 or higher!*

Some cameras and special GPS recording devices extract GPS coordinates and write them into the image files when a photograph is taken. On import, Daminion uses this GPS information to place a corresponding marker on a world map. Image files that don't contain this GPS information can, at any time, be dragged & dropped (individually or as a group) from the browser into their exact position in map view.

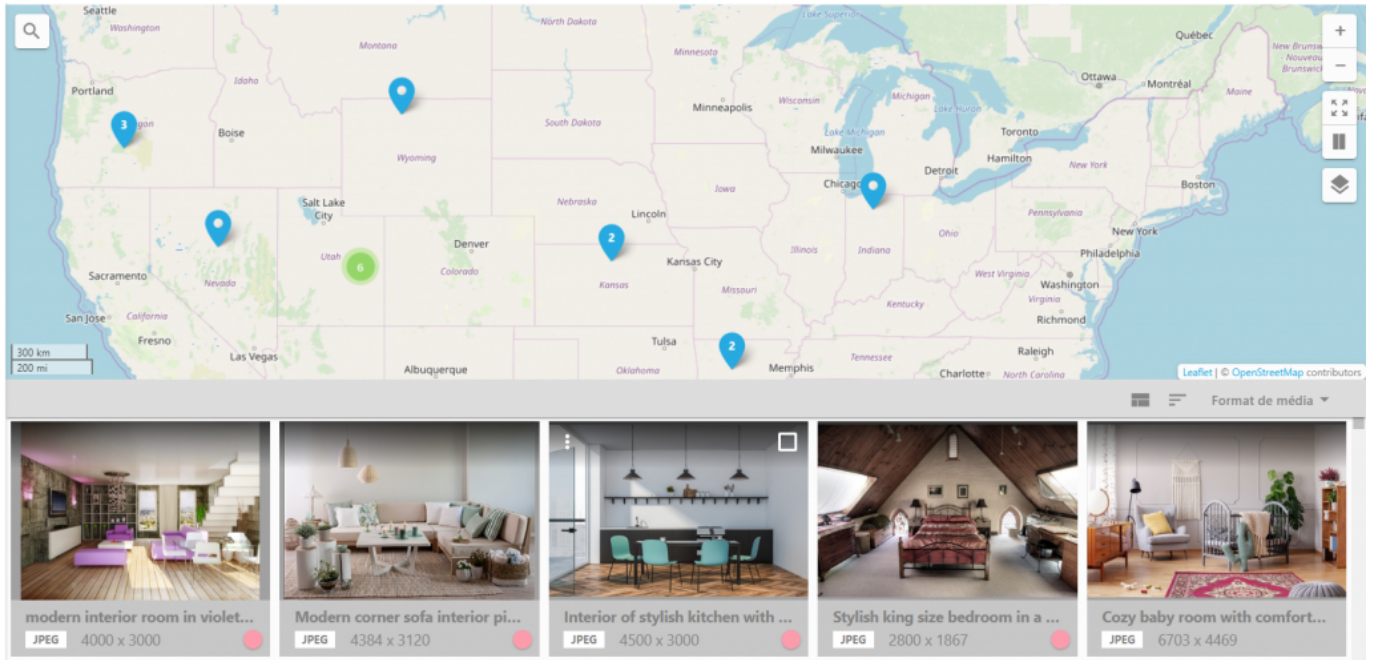
To use GPS-referencing, you need to be connected to the Internet because the respective suppliers only provide GPS data online.

### Geotagging in the web client

To start assigning GPS coordinates to your files, log into your web catalog and click the geo pin icon in the upper right corner to display the Map window.

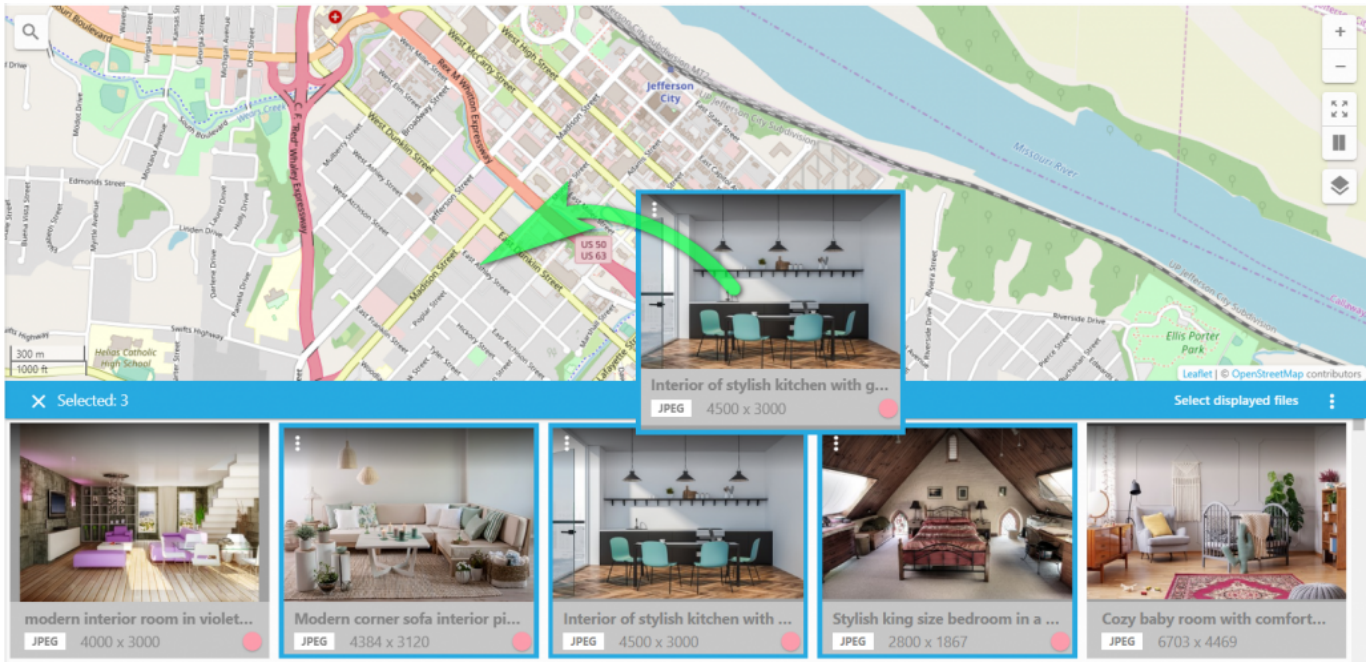


All files that have embedded GPS coordinates, will be automatically displayed on the map.



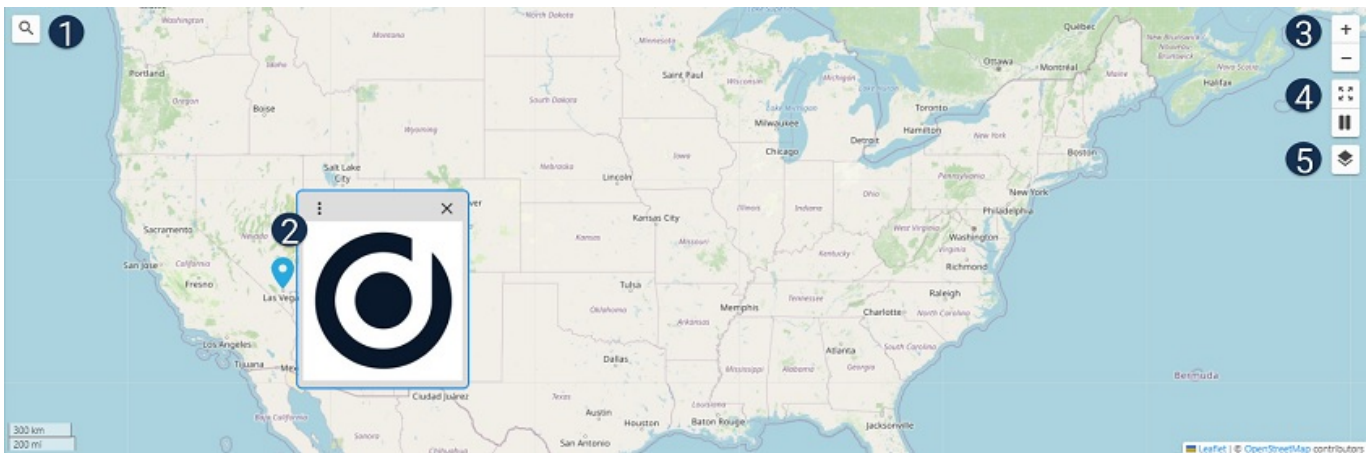
To assign GPS coordinates to the files that do not have them yet, select the files and simply drag and drop them to the desired location on the map.

*Tip: You can display all the files with no GPS coordinates by navigating to Saved Searches > No GPS coordinates.*



Dragging and dropping your files to the desired location on the map

## Map Functions

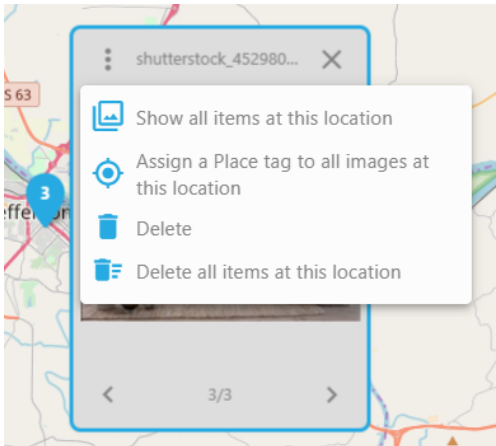


1

Search – type in the name of the location you want to quickly find on the map.

2

Hover your mouse over the GPS pin to view the files assigned to a specific location.



Click the three dots icon on the thumbnail to be able to display all items assigned to this location, add a Place tag, delete just one item or all of the items.

**3** Zoom in and zoom out the map view.

**4** Expand the map to full screen.

Click [here](#) to display the map next to the Thumbnail pane.

The screenshot displays the Daminion Web-Access interface. On the left, a gallery of interior images is shown, each with a thumbnail, filename, and dimensions. On the right, a map of North America is displayed, showing various cities and states. A blue pin is placed on the map near Denver, Colorado, with a small window showing a preview of the selected image.

**Gallery of Interior Images:**

- interiors\_082855\_00083.jpg** (JPEG, 4465 x 6697): A bedroom with a white bed and large windows.
- interiors\_082808\_00007.jpg** (JPEG, 4011 x 6028): A kitchen with white cabinets and a countertop.
- interiors\_082503\_00000.jpg** (JPEG, 4500 x 3000): A decorative arrangement with white vases and pink flowers.
- interiors\_082031\_00000.jpg** (JPEG, 4032 x 3024): A bathroom with a white bathtub and a ladder.
- interiors\_081942\_00004.jpg** (JPEG, 3000 x 4500): A staircase with a black railing.
- interiors\_081850\_00004.jpg** (JPEG, 3936 x 2608): A dining area with a table, chairs, and a lamp.

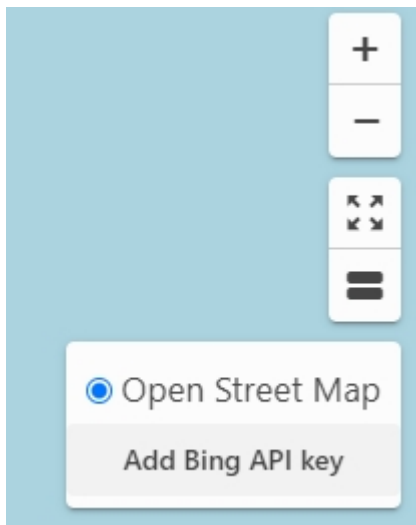
**Map Interface:**

- The map shows North America, including the United States and Mexico.
- A blue pin is located near Denver, Colorado, with a small window showing a preview of the selected image.
- The map includes a search bar, a scale bar (300 km, 200 mi), and a legend.

5

Click this icon to select your map provider. Read more about [Bing Maps](#)





## Pin Icons Indications



Only one image is assigned to this location.



From 2 to 5 images are assigned to this location or the location includes more than 1 pin (zoom in to verify).



From 5 to 10 images are assigned to this location or the location includes more than 1 pin (zoom in to verify).



More than 10 images are assigned to this location or the location includes more than 1 pin (zoom in to verify).