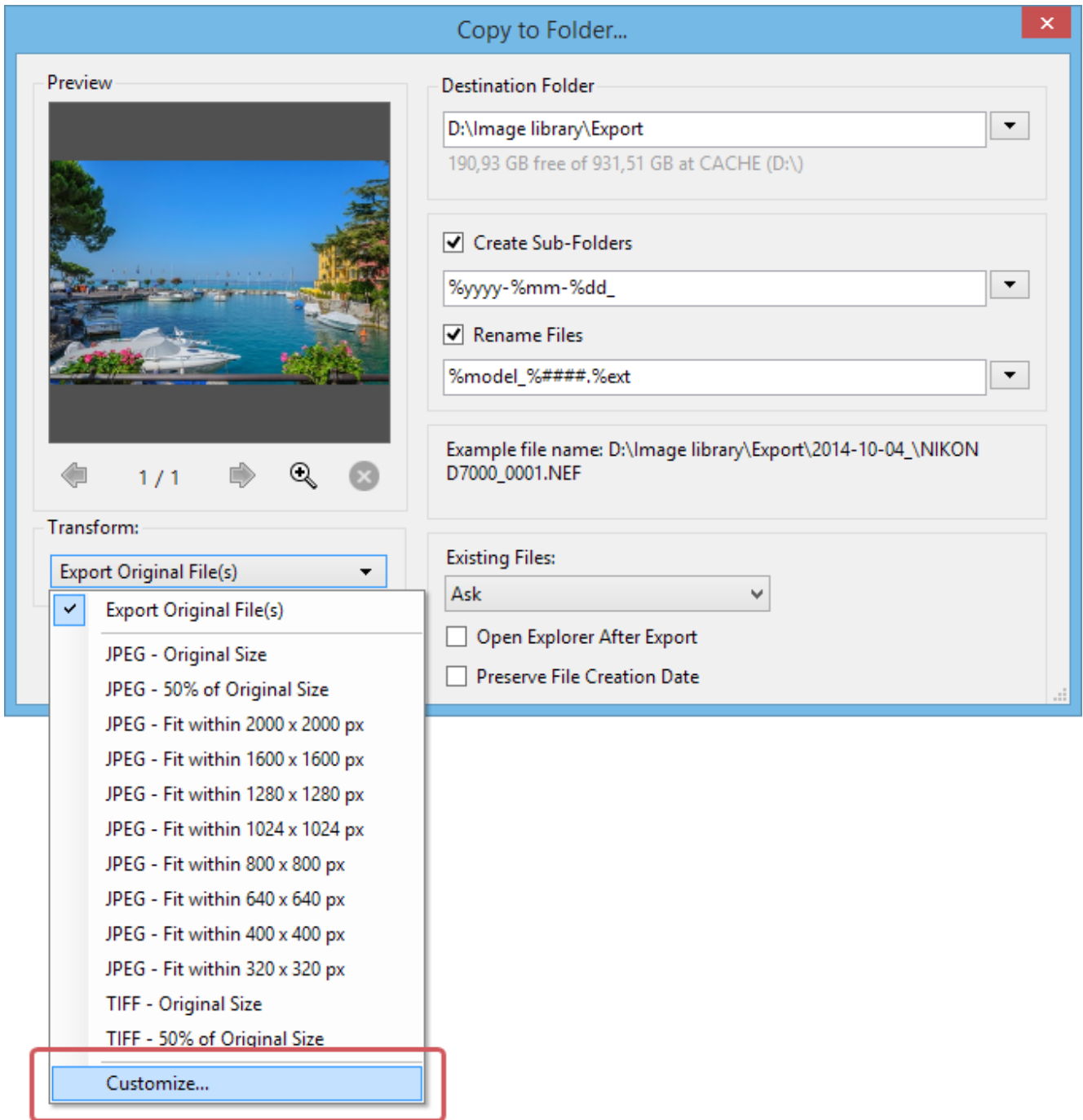


Customized Export Presets

The **Customize Export Preset** dialog allows you to set your own export settings and save them for later use. You can use your customized presets to resize your images, convert image format, rename images and add your own customized watermark.

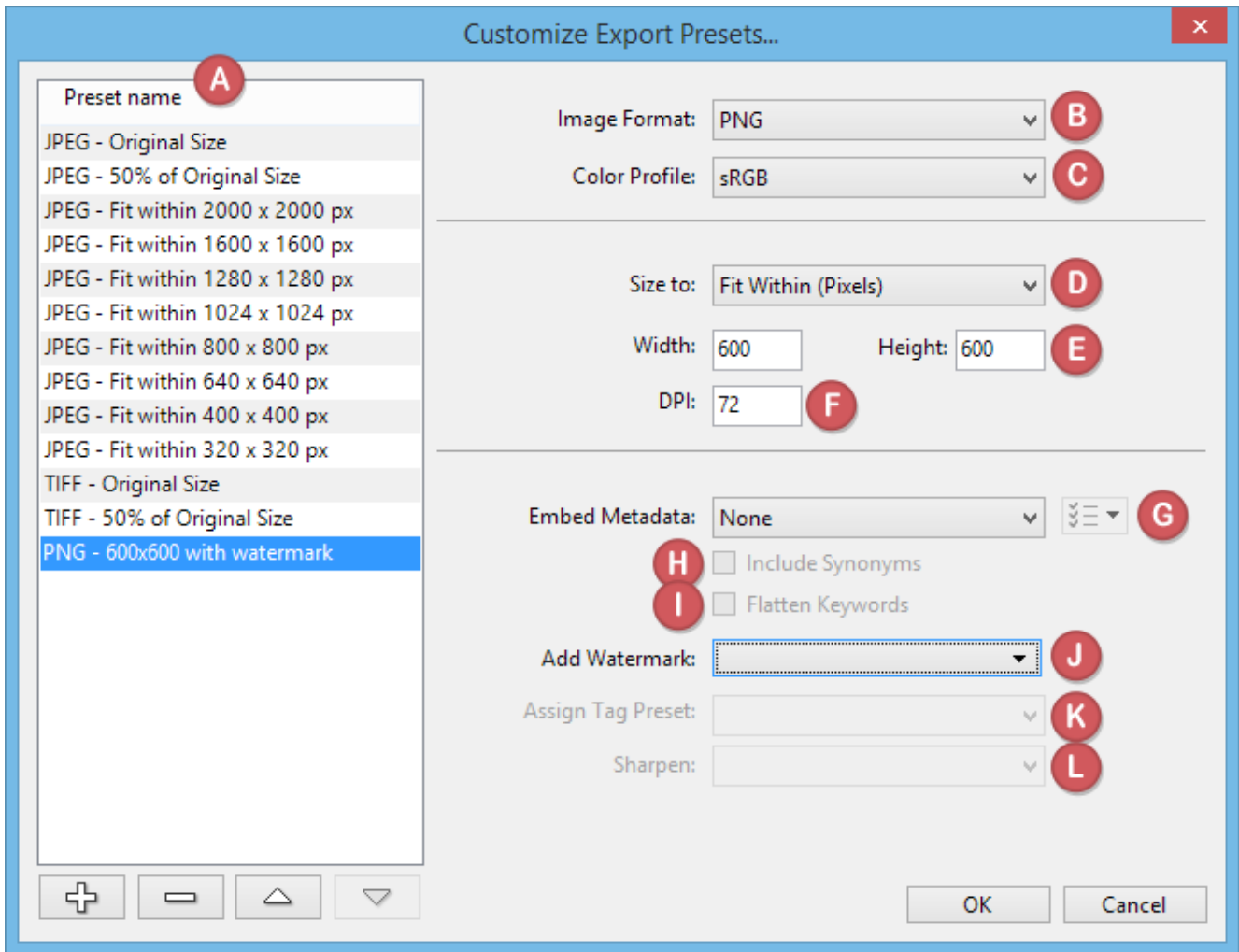
In this chapter we show you how to create and save a custom preset and how to use it later in the “Copy to Folder” dialog.

The **“Customize Export Preset”** dialog can be launched from the **“Copy to Folder”** dialog.



(click to enlarge)

In the “**Transform**” drop-down list, choose “**Customize**” to open the Template Editor (see screen shot above).



(click to enlarge)

Preset Name

This is a list of all the existing export presets. Newly created custom presets appear on the bottom of the list. Click any of the entries on the list to see their corresponding settings on the right of the dialog box.

Buttons below the Preset names list:



Add a new preset




Delete an existing preset



Reorder the list of presets

To create a new preset click the plus button (bottom left corner). This adds a new entry in the list and prompts you to enter a descriptive name.



Override the existing default: “**{format} – {sizeto}**” with a name that best describes the task to be performed.

Alternatively, click any of the presets in the list, enter your changes, and then click the plus button. This will create a new template based on your new settings. The name of this preset will be generated automatically from the size and format settings you have chosen.

Image Format

Select the file type your file(s) should be converted to.

Color Profile

Select the color profile to be embedded in the file. You can apply the default sRGB or let Dominion use the color profile that is already embedded in the image. If you are not sure what to use, just leave it as the default sRGB. This is the most commonly used color profile.

Size To

Select the units of measurement to be used for the image dimensions in the box below. If you select “**Original Size**”, the image will not be resized in any way.

Width/Height

Set desired image size in the units of measurement you selected in the previous option (**D**) **Size To**.


DPI

The DPI (dots per inch) setting is only really needed if you intend to print. For screen use, you can leave it at the default 72 dpi. But set 300 dpi if you want to be able to print the images as well. In fact, the DPI setting doesn't change the image size on-screen, but it can make a big difference to print quality.

Embed Metadata

Decide which metadata should be embedded in the image. You can choose from:

- **None** (*No Metadata is embedded in the image*)
- **All** (*All Metadata is embedded in the image*)
- **All Except Camera Info** (*All Metadata embedded apart from the EXIF Information containing Camera Info such as camera type and model or lenses used*)
- **Copyrights Only** (*Only Copyright Information is embedded in the image*)

To specify exactly which Metadata tags should or shouldn't be taken, click the  button to the right of the Embed Metadata drop-down list.

Note: *To publish your images on the internet, consider choosing **None** to avoid publishing private or confidential information by mistake – because all the metadata an image might contain can easily be read by other software!*

Include Synonyms

If the selected tags contain synonyms, choose whether or not they should be included in the metadata.

Flatten Keywords

If you have created your keyword structure hierarchically, this is where you decide whether to maintain the hierarchic levels or flattened them during the export process.

Add Watermark

Add an image of your choice as a watermark to each image. See the "[Add Watermark](#)" article for details.

Assign Tag Preset

Select a tag preset that you have created using the "[Tag Preset Editor](#)".

Sharpen:

Add some of the sharpness that images have lost after resizing.

Click "**OK**" to close the dialog box. The new custom preset will be added to the preset list and can be recalled whenever

needed.

To start export, select the desired preset from the list and click **“Copy”**, or press **F7**.